

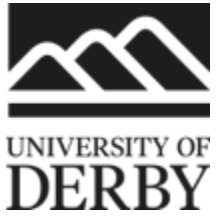


FdSc Nursing Associate (online)

Information, Advice and Guidance



University of Derby Online learning



The University of Derby is a leader in online education and have been for over two decades with over 100 part-time courses specially designed for online study. Programmes are engaging and interactive and meet high academic and professional standards.

From the experts

Programmes are created and taught by experts with many academics being active researchers and working at the forefront of their fields, to bring cutting-edge insights into their teaching.

High academic standards

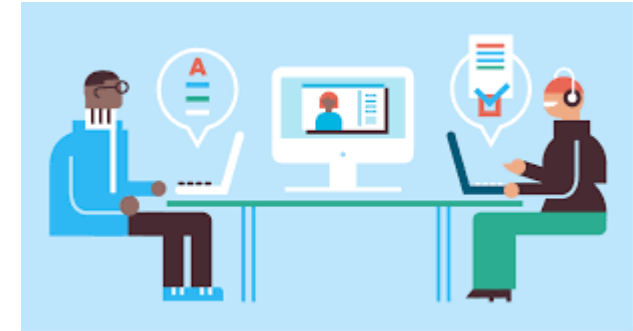
Programmes are built around robust academic frameworks that are approved to UK standards, so you'll get the same internationally recognised qualifications that you would from an on-campus course.

High professional standards

The university has more [accredited programmes](#) than any other online education provider in the UK. That's because they've been developed with input from employers and professional bodies.

The best online student experience

Learning is engaging, interactive, social and collaborative. To ensure students get the best online student experience possible, the university has developed its own model for online learning. It combines best practice principles around programme design, online teaching and learning, support and inclusivity, with current [digital tools and platforms](#). This model, which is unique to the University, and has been based on the latest research and data along with what we've personally learned from our over two decades of experience in online teaching



What is a Nursing Associate?

- A member of the nursing team in England that helps bridge the gap between health and care assistants and Registered Nurses.
- They can work with people of all ages, and in a variety of settings in health and social care.
- The role contributes to the core work of nursing, freeing up Registered Nurses to focus on more complex clinical care.
- A stand-alone role that also provides a progression route into graduate level nursing.



FdSc Nursing Associate (online)

- Academic Programme - 2 years to achieve the Foundation Degree
- Apprenticeship length (Academic programme + End point assessment) - 27 months

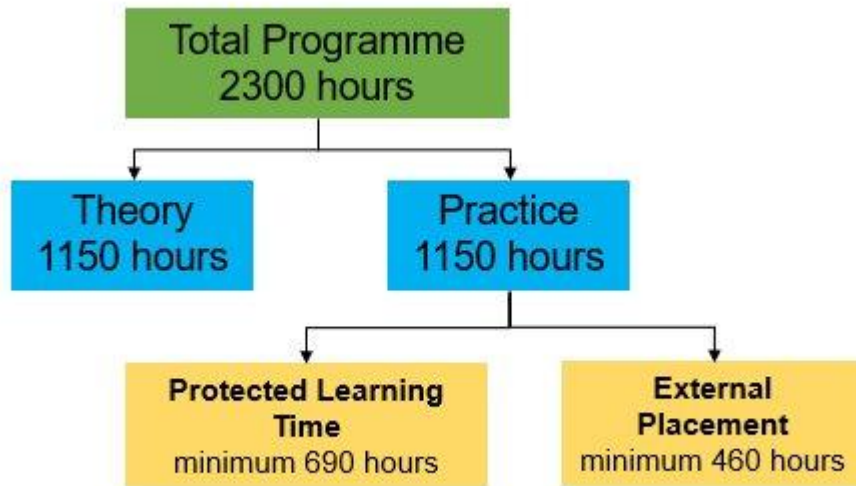


Programme Overview



The Nursing Associate programme meets the NMC Standards and Apprenticeship Standards and is made up of:

- 50% theory (minimum 1150 hours) which is assessed online during theory modules.
- 50% practice (minimum 1150 hours) which is assessed in the workplace using the Practice Assessment Document.



Apprentices are Student Nursing Associates for 24 months plus 3 months to allow for the End Point Assessment.

The apprenticeship is a work-placed learning route, and students are released for:

- **Academic study** (1 day per week & contracted hours for protected theory weeks and assessment weeks).
- **External practice placements** (min 460 hours - to develop the breadth of experience required for a generic role).
- **Protected learning time** in workplace (min 690 hours).

[\(NMC, 2023\)](#)

| | | | |
|-----------------------|----------------------------|-------------------------|--------------------------------------|
| Theory | Practice | | Not counted as programme time |
| University study days | Placement | Protected learning time | Work without protected learning time |
| 1150 hours | Minimum 460 hours | Minimum 690 hours | Up to 1445 hours |
| | Total = minimum 1150 hours | | |

Entry Requirements

Foundation Degree Nursing Associate Apprenticeship (online)

Entry Criteria

- Level 2 (or equivalent) Maths and English
- Minimum relevant Level 3 qualification or portfolio assessment
- Paid employment of at least 30 hours per week.
- Employer to confirm they can provide a range of placement experiences.
- Employer to confirm they are able to meet NMC SSSA requirements.
- Employer to confirm have met occupational health and DBS requirements.

Entry Requirements

Foundation Degree Nursing Associate Apprenticeship (online)

For entry to the online programme, employers must commit to the following requirements:

- In partnership with the University of Derby, and as part of the NMC Modification Process, be approved as an employer partner.
- Ensure learners have protected practice learning time in their base placement and are adequately supervised by a registered healthcare practitioner in line with the NMC (2023) SSSA standards.
- Provide practice learning experiences for learners including identifying and arrange alternative practice experiences where the learners undertake at least 460 hours of supernumerary practice which meet the NMC (2023) Standards for pre-registration nursing associate programmes.
- Provide academic theory time to learners in line with programme requirements and which meet the NMC (2023) Standards for pre-registration nursing associate programmes

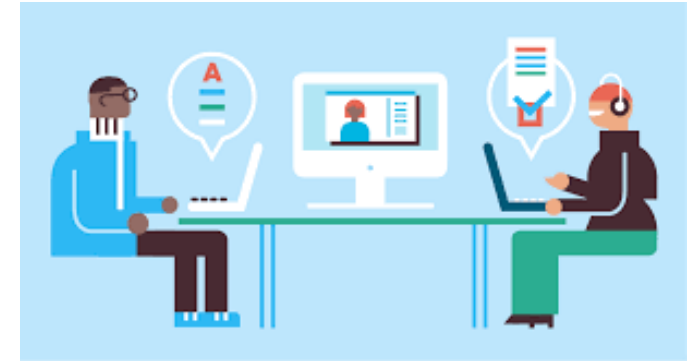
Learning and Teaching

The programme offers both variety and flexibility and ensures that the learning and assessment activities are relevant and of value to student's future professional practice.

It follows the University's trimester study pattern.

Each trimester is 17 weeks and is structured as follows:

| | |
|------------|--|
| Weeks 1-10 | Structured tutor supported learning through online activity-based study materials, webinar-based tutor led learning, group discussions and reading weeks |
| Week 11 | Assessment week and assignment submission |
| Week 12-17 | Consolidation and learning activities |



Learning and Teaching

Study can be undertaken flexibly during teaching weeks, however attendance at live sessions is compulsory.

Study time is allocated as follows:

- Module prep weeks - 7.5 hours per week
- Teaching weeks – 7.5 hours per week.
- Reading and assessment weeks – 30/37.5 hours (depending on student employment contract).
- Consolidation/stretch and challenge weeks - 7.5 hours per week

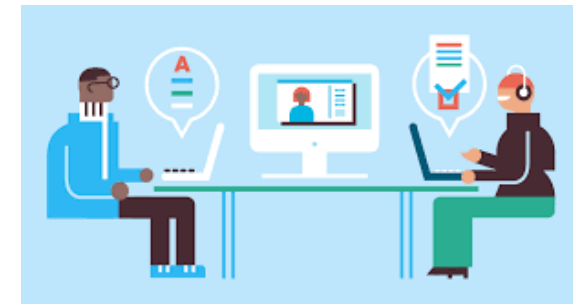
The remainder of the working week will be spent in the workplace, with practice time allocated as illustrated on slide 12 Practice Placements.

Learning and Teaching

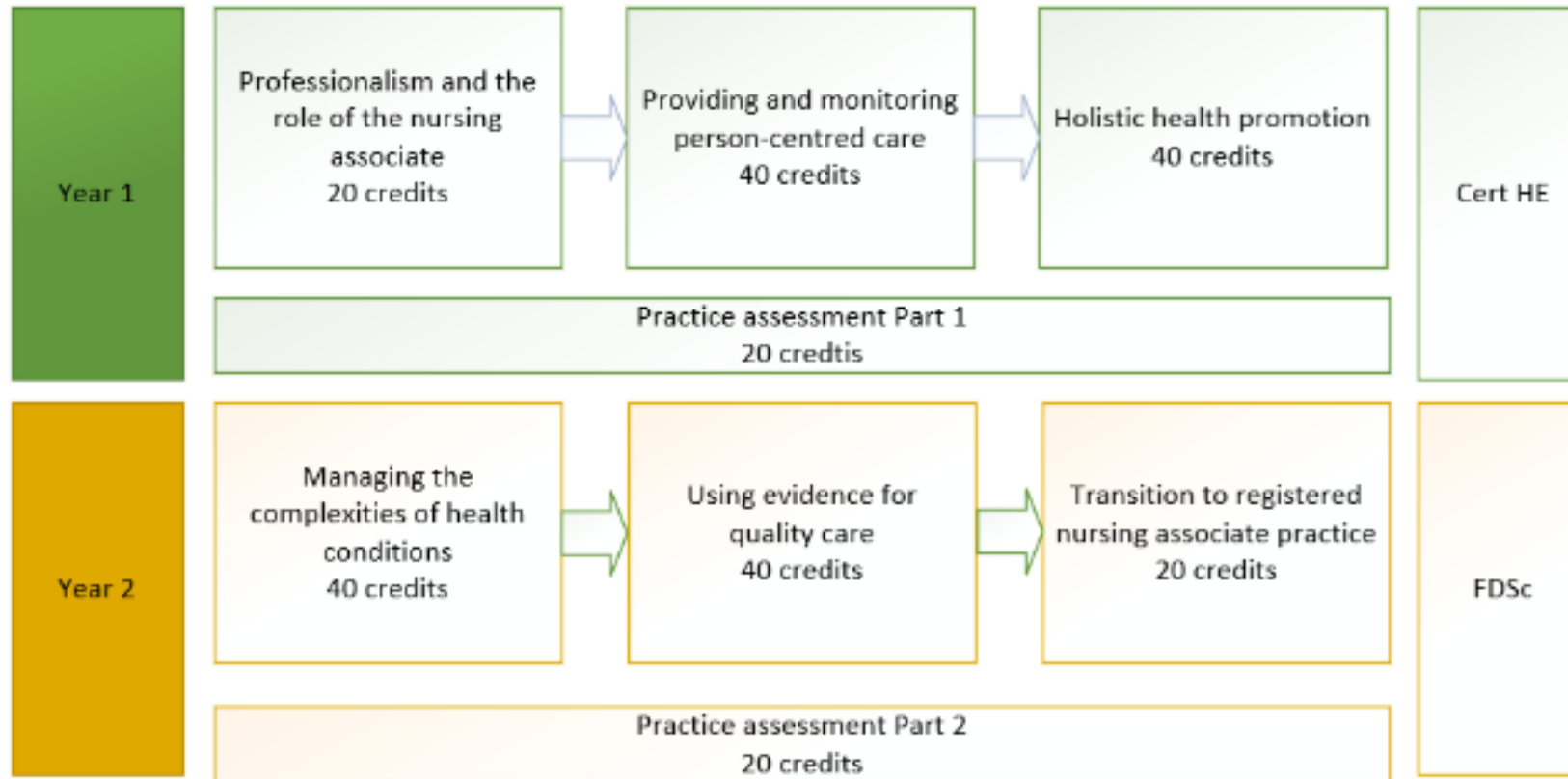
All study materials, reading, guidance, and handbooks for the online route are available in an online format.

The learning and teaching methods predominantly used are as follows:

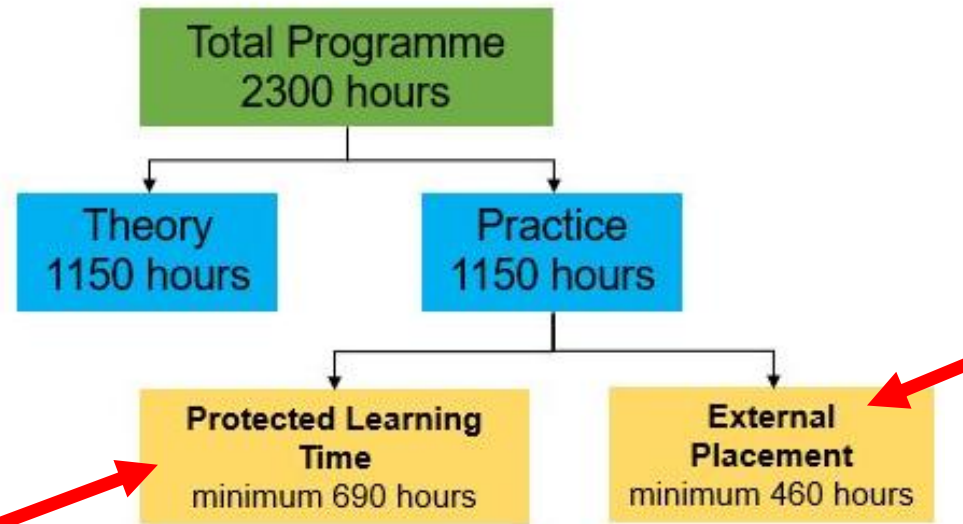
- Self-paced, online study and research.
- Discussion boards, enabling students to work on unit activities, to discuss a particular topic with fellow students and tutors, to communicate with each other on aspects of the study materials, and share experiences related to the module topic.
- Live sessions by a module tutor; delivered and recorded for each module.
- Pre-recorded videos delivered by members of the academic team, available to watch at any time.



Nursing Associate Apprenticeship – Module structure



Practice Placements



- Majority of time spent in the Base Placement (students' regular workplace), supported by Practice Supervisors.
- Must be allocated a Practice Assessor.
- The Practice Assessor may or may not work in the base area but is responsible for reviewing evidence and overall assessment of student.
- Protected learning time is designated time in which students are supported to learn as indicated in the [NMC Protected Learning time supporting information \(NMC, 2018\)](#). During this time, students have a greater level of supervision and will experience closer working with their supervisor.
- Any time which is not protected learning time cannot be counted towards total programme hours.
- Recorded in the Practice Assessment Document (PAD)

- Placements away from a trainee's regular workplace.
- Minimum of 460 hours must be achieved over the two years.
- May take place within the organisation or outside of the organisation.
- Students may be supernumerary and work across a range of shifts relevant to that area.
- To develop the breadth of experience required for a generic role and allow students to become aware of the breadth of factors associated with providing care to different types of service user.
- Insight visits are shorter placements or visits which aim to help students understand the patient's journey or to support their personal development.
- Recorded in the Practice Assessment Document (PAD)

External Placements



External placement are:

- Placements organised by the employer and are placements outside of the regular workplace.
- Required by the NMC to help students to develop the breadth of experience associated with providing care to different types of service user.
- All students must meet minimum 460 hours (approx. 12 weeks for full time student) placement regardless of contracted hours.
- All placements must have adequate supervision arrangements in line with NMC SSSA.
- It is the employer's responsibility to ensure placements meet the quality assurance requirements however overall accountability remains with the University.

When should external placement take place:

- Ideally split across years 1 and 2 to scaffold and support learning
- Flexible to meet the needs of the employer and/or student.
- Placements may take place within or outside the organisation.
- They can vary in length from insight visits which aim to help students understand the patient's journey or to support their personal development to longer placement blocks.

An example of external placement weeks can be seen as highlighted in orange:

| | | | | | | | | | | | | | | | | | | | | | | | | | | | | | | | | | | | | | | | | | | | | | | | | | | | | |
|---------------|-----|----|----|----|----|----|----|----|----|----|----|----|----|----|-----|-----|-----|----|----|----|----|----|----|----|----|----|----|----|----|----|----|----|-----|-----|-----|----|----|----|----|----|----|----|----|----|----|-----|---|-----|---|-----|---|-----|
| Academic Week | 7 | 8 | 9 | 10 | 11 | 12 | 13 | 14 | 15 | 16 | 17 | 18 | 19 | 20 | 21 | 22 | 23 | 24 | 25 | 26 | 27 | 28 | 29 | 30 | 31 | 32 | 33 | 34 | 35 | 36 | 37 | 38 | 39 | 40 | 41 | 42 | 43 | 44 | 45 | 46 | 47 | 48 | 49 | 50 | 51 | 52 | 1 | 2 | 3 | 4 | 5 | 6 |
| Year 1 | Ind | T1 | T1 | T1 | T1 | T1 | RW | T1 | T1 | T1 | T1 | A | H | H | S&C | S&C | S&C | MP | T2 | T2 | T2 | T2 | T2 | RW | T2 | T2 | T2 | T2 | A | H | H | H | S&C | S&C | S&C | MP | T3 | T3 | T3 | T3 | T3 | RW | T3 | T3 | T3 | T3 | A | S&C | H | H | H | S&C |
| Academic Week | 7 | 8 | 9 | 10 | 11 | 12 | 13 | 14 | 15 | 16 | 17 | 18 | 19 | 20 | 21 | 22 | 23 | 24 | 25 | 26 | 27 | 28 | 29 | 30 | 31 | 32 | 33 | 34 | 35 | 36 | 37 | 38 | 39 | 40 | 41 | 42 | 43 | 44 | 45 | 46 | 47 | 48 | 49 | 50 | 51 | 52 | 1 | 2 | 3 | 4 | 5 | 6 |
| Year 2 | Ind | T1 | T1 | T1 | T1 | T1 | RW | T1 | T1 | T1 | T1 | A | H | H | S&C | S&C | S&C | MP | T2 | T2 | T2 | T2 | T2 | RW | T2 | T2 | T2 | T2 | A | H | H | H | S&C | S&C | S&C | MP | T3 | T3 | T3 | RW | T3 | T3 | T3 | T3 | A | S&C | H | H | H | S&C | | |

| | | | | | | |
|-----|----------------------------------|----|--------------------|----|---------------|--------------------|
| T | Trimester | MP | Module preparation | H | Holiday | External Placement |
| S&C | Stretch and challenge activities | A | Assessment weeks | RW | reading weeks | |

Supporting and Assessing Students in Practice

- Practice learning is underpinned by the Standards for Supervision and Assessment (SSSA) (NMC, 2023) and this is assessment using the Practice Assessment Document (PAD).
- Practice learning is supported by Practice Assessors, Practice Supervisors, and Academic Assessors who ensure students receive the appropriate support, and that robust assessment takes place.
- Continuous assessment is an integral aspect of assessment in practice, and students must show evidence of consistent achievement throughout each placement.
- Students are expected to engage positively in all learning opportunities, take responsibility for their own learning and know how to access support. Students are also responsible for raising concerns in the practice setting in a timely manner.

Standards for Student Supervision and Assessment



Practice Assessor

- NMC Registered Nurse or Nursing Associate who has field specific registration or relevant experience in the same field of practice and has undertaken Practice Assessor preparation.
- Responsible for the formal assessment of student achievement.
- May not always work alongside students on a day-to-day basis to remain objective in their assessment.

Practice Supervisor

- Any registered professional who has had Practice Supervisor preparation.
- Help students develop knowledge and skills within the placement area and may undertake initial interviews and help set learning outcomes and objectives.
- Informs Practice Assessor on progress to contribute to assessment (some areas may adopt a team-based approach due to the nature of the experience).
- May contribute to assessment within PAD where appropriate in conjunction with the Practice Assessor.

Academic Assessor

- Member of the academic team who has undertaken Academic Assessor preparation and an NMC Registered Nurse or Nursing Associate.
- The first point of contact for both students and practice staff where there are concerns or queries raised in practice.
- Responsible for signing off to allow progression into the next stage of study and to verify that students have met all NMC requirements for registration.

The level of supervision will be high at first and this will decrease throughout the programme as students gain knowledge, skills and independence.

Supervision remains an ongoing requirement until qualification and registration.

End Point Assessment (EPA)

Once all theoretical and practice learning is complete Students undertake the EPA to complete the apprenticeship.

The EPA is fully integrated into the programme it starts at the academic board and ends when students register with the NMC.

Students gather evidence towards their end point assessment throughout the entirety of the programme.

To start the EPA, students must engage in a special tripartite review called a ‘gateway meeting’ which includes a skills scan and review programme.



End-point assessment plan for Nursing associate fully integrated apprenticeship standard

| Apprenticeship standard number | Level of this end-point assessment (EPA) | Integrated |
|--------------------------------|--|------------------|
| ST0827 | 5 | Fully integrated |

More information about the EPA can be found on the [Institute for Apprenticeships website](https://www.institute-for-apprenticeships.org.uk/).

Supporting the student journey

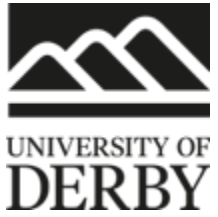
- Off the job learning, protected learning time in practice and external placements are monitored throughout the programme.
- Students will have 4 tripartite reviews per year with their Academic Assessor and employer representative. This provides opportunity to:
 - Discuss development opportunities.
 - Monitor progress.
 - Provide feedback on the apprenticeship to the University.
 - Participate in University of Derby external agency inspections.
 - Advise the University of Derby of absences and work-based issues that may affect the apprenticeship.
 - Notify the University of Derby of any changes in circumstance (change of supervisor/working hours/work pattern/role)



Apprentice Support – University and Employer responsibility

| Area of support | University responsibility | Employer responsibility |
|---|---|---|
| Tripartite reviews – every 3 months to review progress on programme | Allocation of Academic Assessor to engage in reviews, document on PAD | Allocation of work-based supervisor and assessor to engage in reviews, document on PAD. |
| Practice Assessment | Allocation of Academic Assessor as per NMC requirements. PAD support and preparation for practice. Training and support for Practice Assessors and Supervisors if required. | Allocation of Practice Assessor and Practice Supervisor as per NMC requirements. |
| Theory Assessment | Providing all online learning materials, support, marking and feedback | Ensure students get off the job hours each week. Ensure students get off the job hours during assessment and reading weeks. |
| Placement | Audit and other quality assurance of placement Putting placement on ARC Ensure NMC approval in place | Allocation of base and external placements. Access to range of learning opportunities to support achievement of proficiencies. Ensure placements meet quality assurance requirements. |
| Academic support | Provision of all learning materials, module leaders, personal academic tutor, access to library and study support | Ensure students get off the job hours |
| Wellbeing | Access to student services, Academic Assessor and learner support. | Access to normal employee services for wellbeing, occupational health, line management and policies. |
| Reasonable adjustments | Assessment via student services for support plan | Reasonable adjustments in placement in line with organisations policies and procedures. |
| Pre offer checks | Relationship coordinators to complete pre interview checks, apprenticeship hub to draw up contracts. | Employer to confirm DBS and occupational health prior to admission to programme. Completion of relevant paperwork and NMC approval prior to enrolment. |

Key contacts



- The University has a central Apprenticeship hub with a generic email address: apprenticeships@derby.ac.uk
- The central college team are:
 - Ben Cope (Business Development Manager) b.cope@derby.ac.uk
 - Lauren Till (Relationship Coordinator) – l.till@derby.ac.uk

Students can complete a free online MOOC [Preparing for Undergraduate Study](#) prior to the commencement of the programme that is designed to help build academic skills in preparation for undergraduate study within health or social care.



UNIVERSITY OF
DERBY

University of Derby, Kedleston Road, Derby, DE22 1GB

T +44 (0)1332 591044 E opendays@derby.ac.uk



THANK YOU

derby.ac.uk