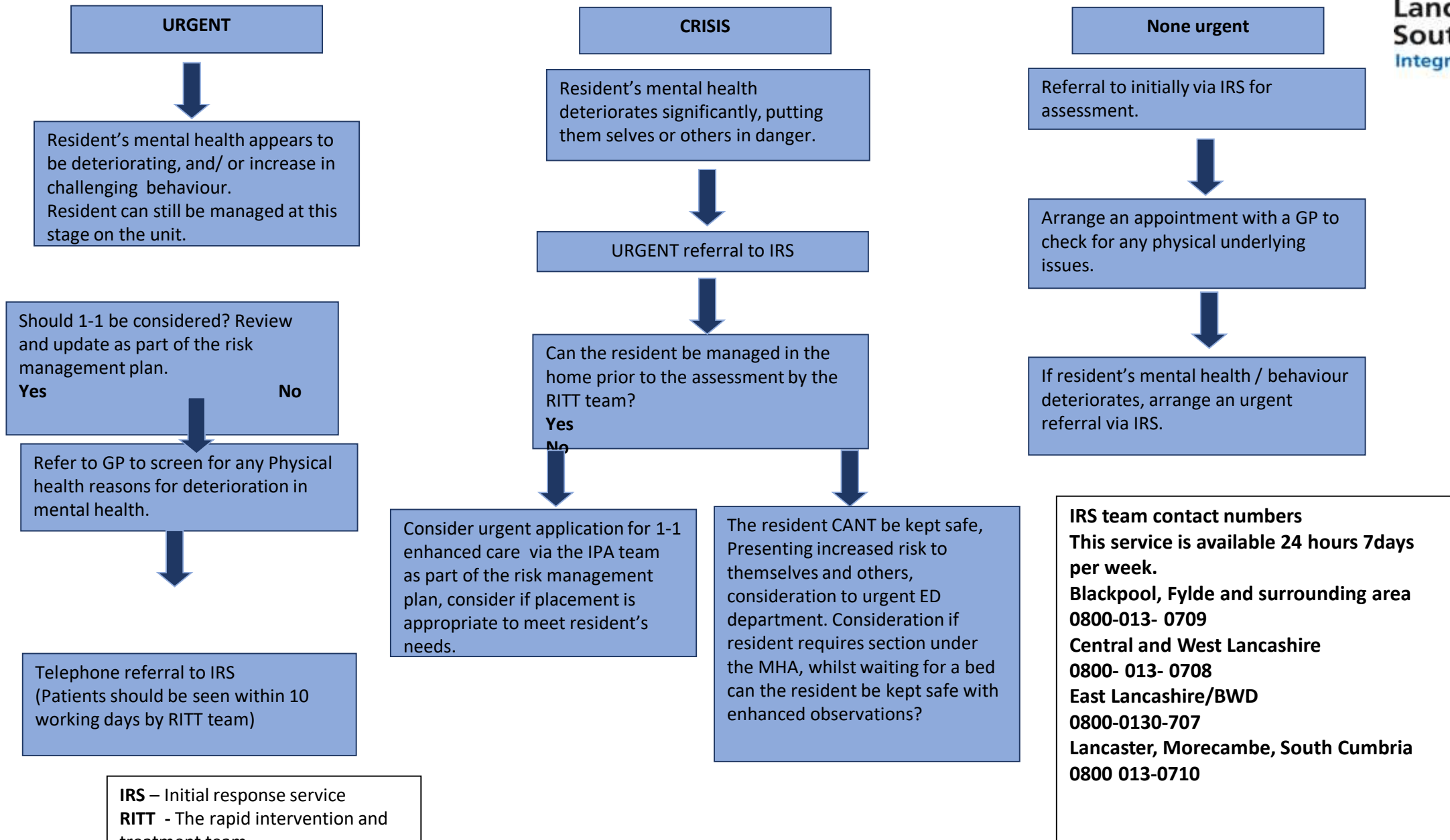


Quick flow referral chart: Mental Health Referrals from Care Homes



Lancashire and South Cumbria
Integrated Care Board



IRS – Initial response service
RITT - The rapid intervention and treatment team

IRS team contact numbers
This service is available 24 hours 7days per week.
Blackpool, Fylde and surrounding area
0800-013- 0709
Central and West Lancashire
0800- 013- 0708
East Lancashire/BWD
0800-0130-707
Lancaster, Morecambe, South Cumbria
0800 013-0710