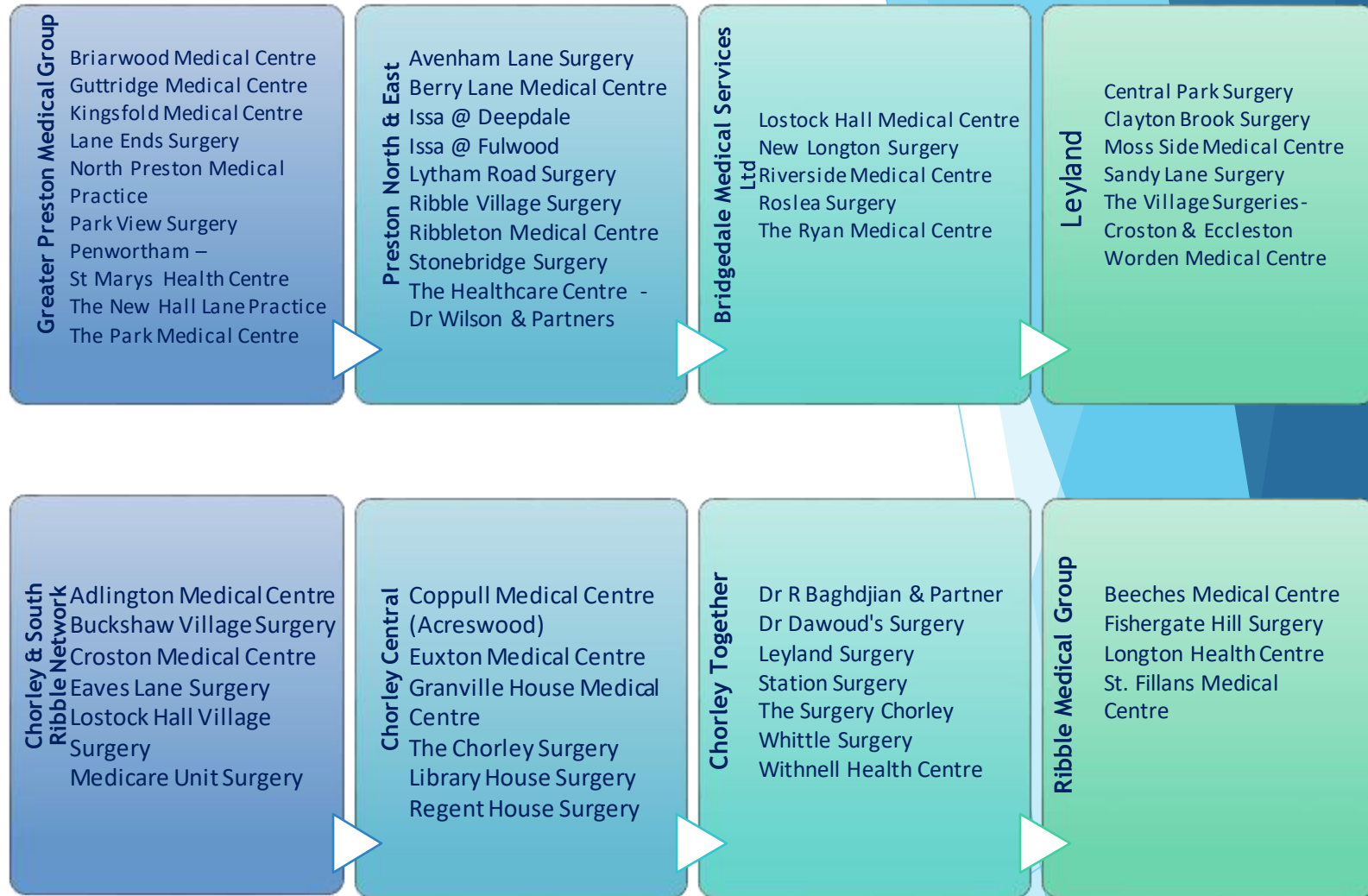
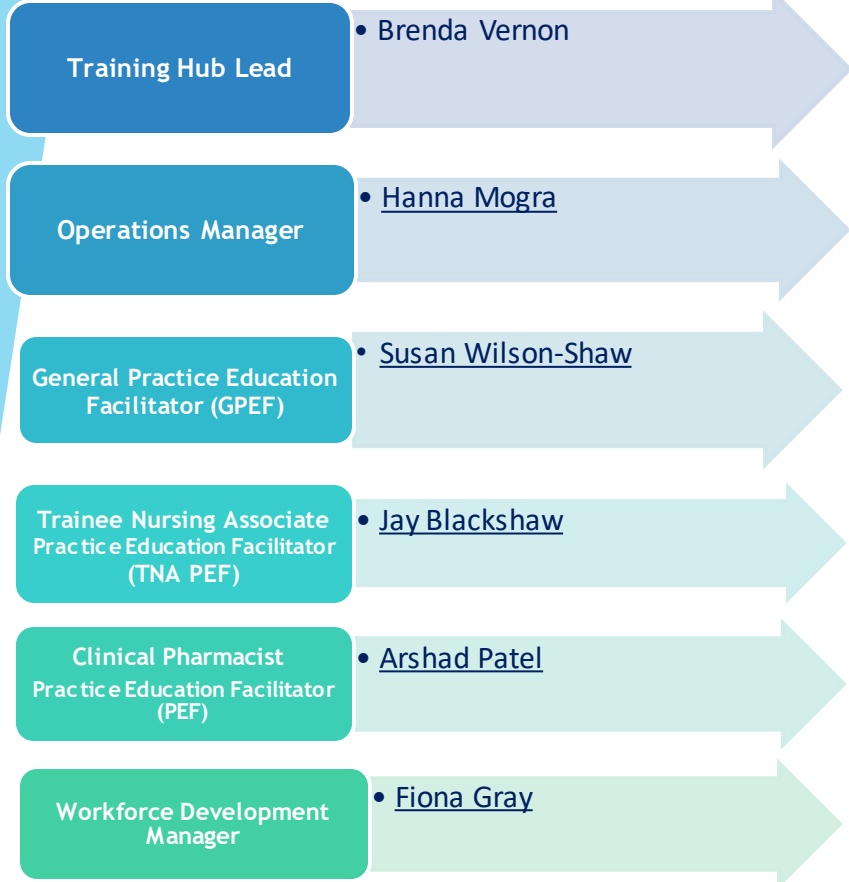
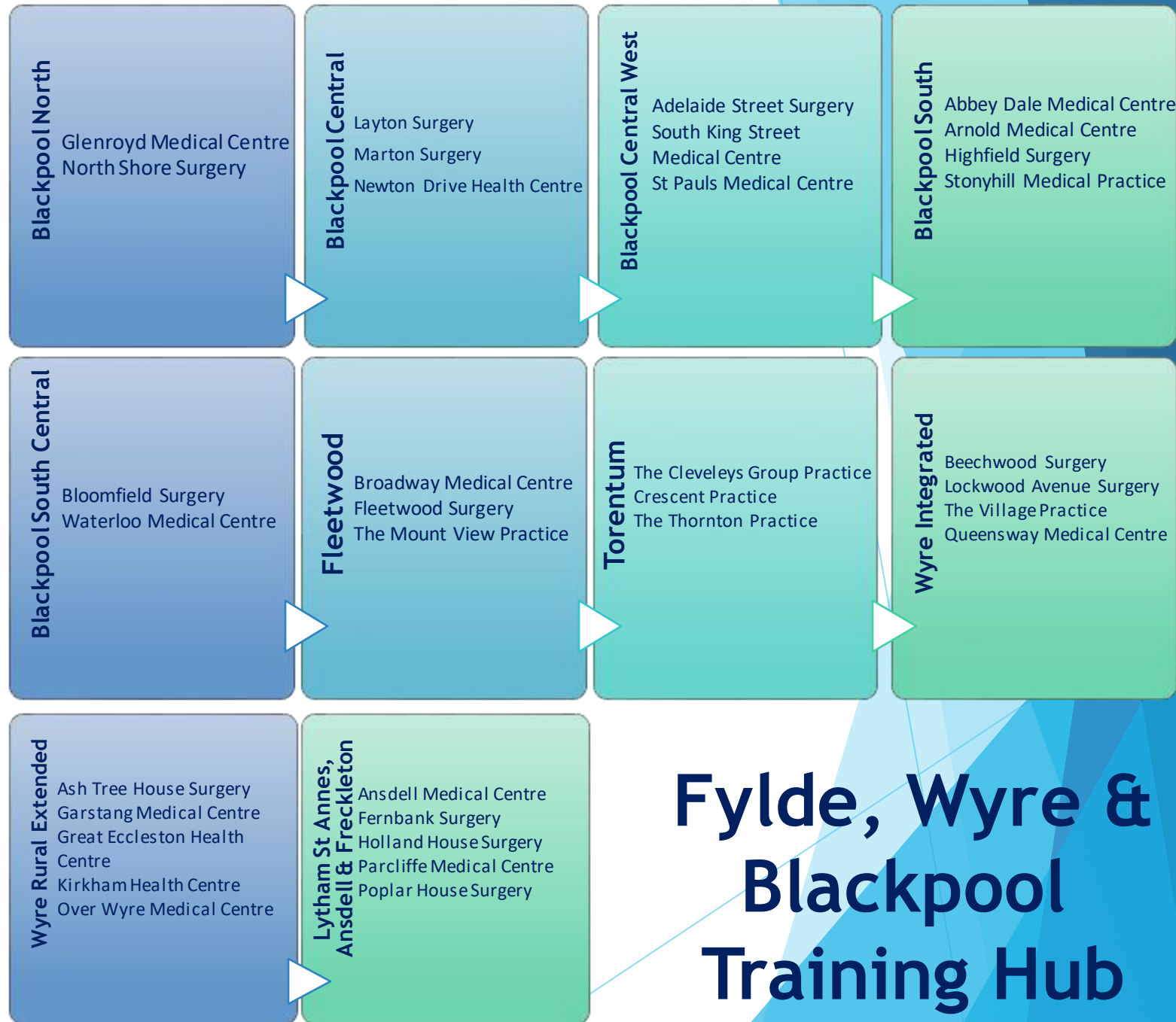
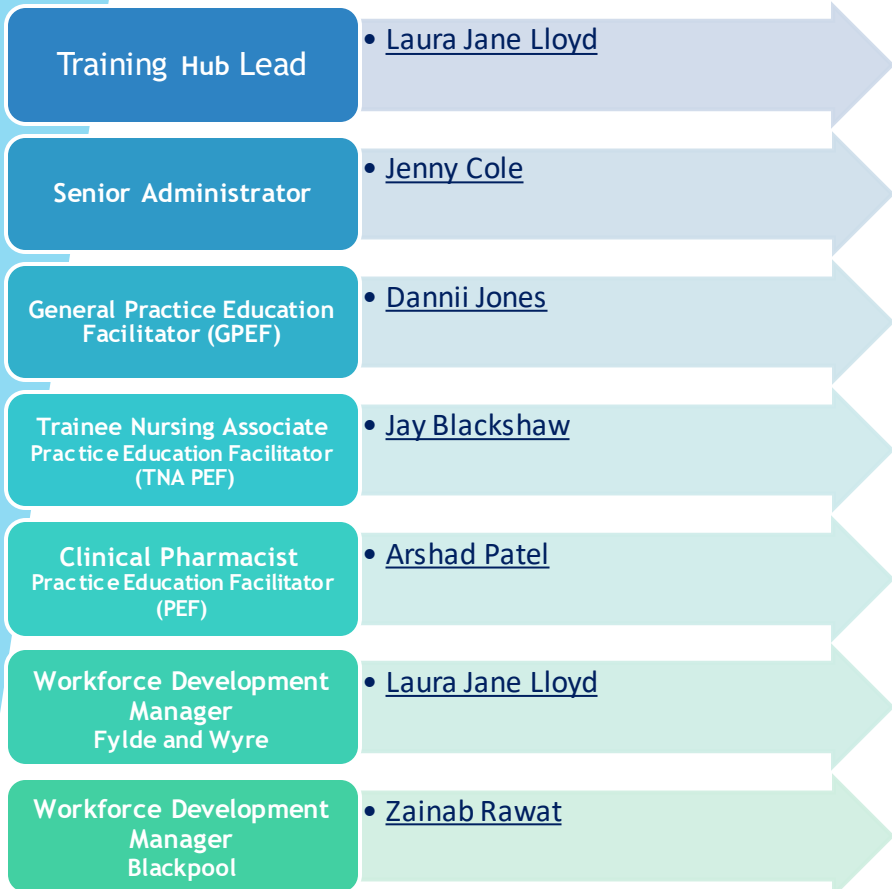


Primary Care Networks (PCNs)



Central Lancashire Training Hub

Primary Care Networks (PCNs)



Fylde, Wyre & Blackpool Training Hub



Primary Care Networks (PCNs)

- Training Hub Lead** • [Boyana Konar](#)
- Operations Manager** • [Thomas Coulton](#)
- General Practice Education Facilitator (GPEF)** • [Dannii Jones](#)
- Trainee Nursing Associate Practice Education Facilitator (TNA PEF)** • [Jay Blackshaw](#)
- Clinical Pharmacist Practice Education Facilitator (PEF)** • [Arshad Patel](#)
- Workforce Development Manager South Cumbria** • [Zainab Rawat](#)
- Workforce Development Manager Lancaster, Carnforth & Milnthorpe and Morecambe Bay** • [Laura Jane Lloyd](#)

Barrow Together

- Abbey Road Surgery
- Atkinson Health Centre Practice
- Bridgeway Medical Centre
- Burnett Edgar Medical Centre
- Duke Street Surgery
- Norwood Medical Centre
- Risedale Surgery
- The Family Practice

Bay Primary Care Network

- Heysham Primary Care Centre
- Morecambe Health Centre
- Westend Medical Practice
- Westgate Medical Practice
- York Bridge Surgery

Carnforth & Milnthorpe

- Ash Trees Surgery
- Park View Surgery

Grange & Lakes

- Cartmel Surgery
- Central Lakes Medical Practice
- Haverthwaite Surgery
- Nutwood Medical Practice
- Peninsula Medical Practice
- St Mary's Surgery
- Windermere and Bowness Practice
- Wraysdale House Surgery, Coniston

Kendal

- Captain French Surgery
- James Cochrane Practice
- Station House Surgery

Mid Furness

- Duddon Valley Medical Practice
- Market Street Medical Practice
- Ulverston Community Health Centre - Hoad Medical Practice
- Ulverston Community Health Centre - Dr Murray & Partners

Lancaster

- Lancaster Medical Practice
- Queen Square Surgery

Western Dales

- Bentham Medical Practice
- Lunesdale Surgery
- Sedbergh Medical Centre

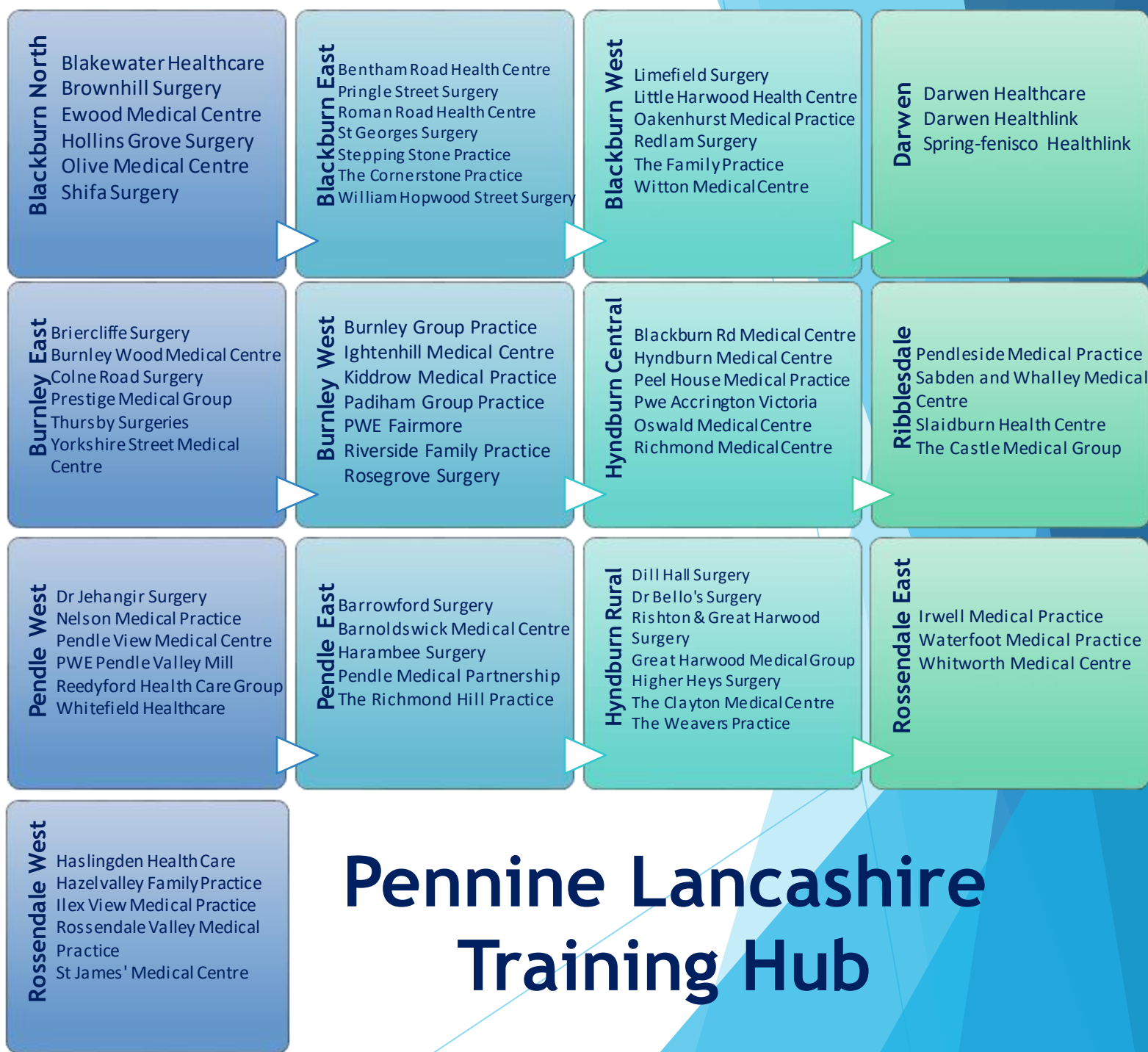
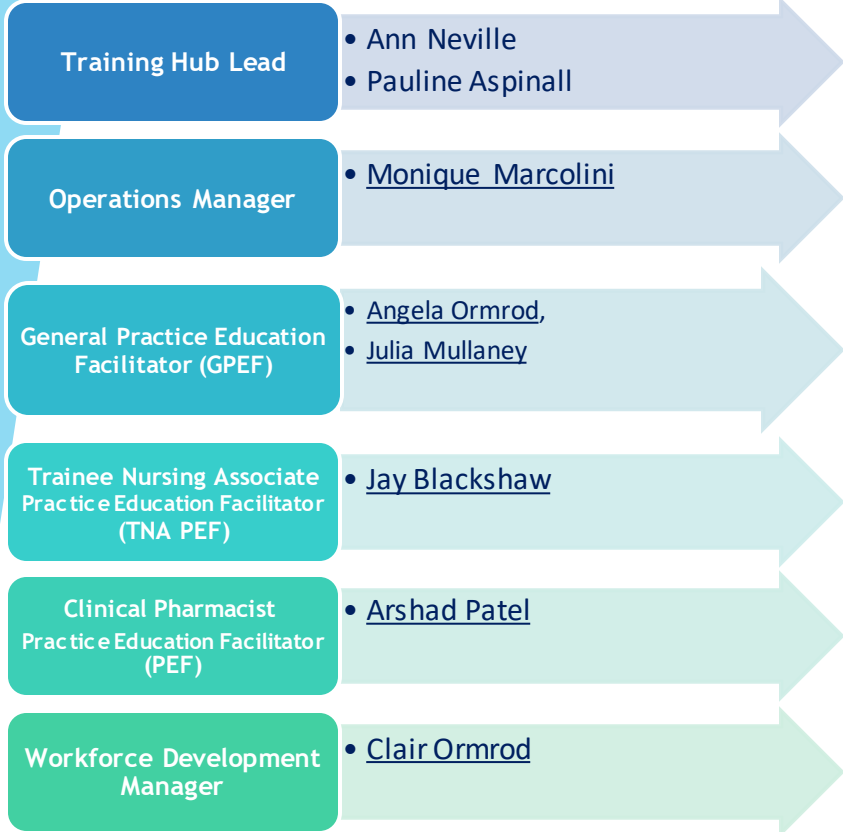
Millom

- Waterloo House Surgery

Morecambe Bay Training Hub



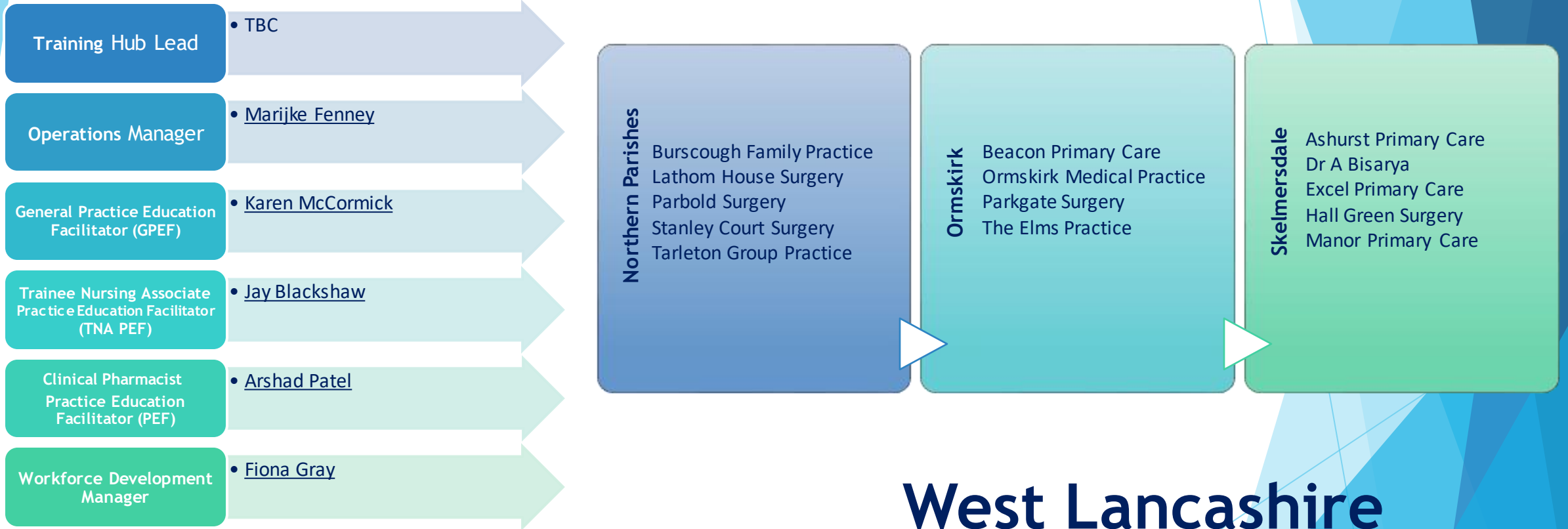
Primary Care Networks (PCNs)



Pennine Lancashire Training Hub



Primary Care Networks (PCNs)



West Lancashire Training Hub